

Pegler PB400

2-piece Full Port Brass Ball Valve
yellow lever, female ends

Pegler

DESCRIPTION

The Pegler Yorkshire PB400 is a Full Port Forged Brass Ball Valve suitable for a wide range of flow control applications including HVAC, fuel gas, fire protection, irrigation etc.

These NPT threaded, 2-piece valves combine reliable operation with maximum economy.

FEATURES

- Heavy Pattern Forged Design
- Corrosion Resistant Materials
- Full-Port Flow
- Premium PTFE Seats and Packing
- Adjustable Stem Packing
- Blow-Out Proof Stem
- Silicone Free Assembly
- 100% Factory Tested

APPROVALS

- MSS-SP-110
- IAPMO IGC-157 Ball Valves
- ASME B16.44 (5 PSI)
- ASME B16.33 (125 PSI) (1/2" – 2")
- UL Guides: YSDT, MHKZ, YQNZ, YRBX & YRPV
- UL Guide VQGU (1/4" – 4")



SIZES

Taper / American (NPT) Taper

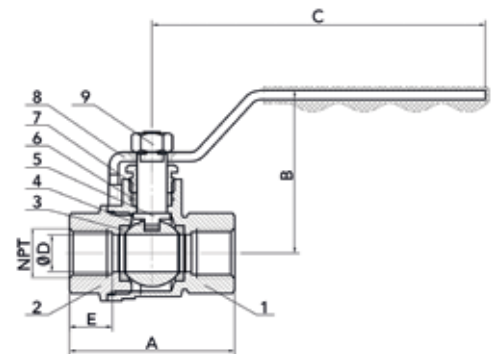
Range	1/4"	3/8"	1/2"	3/4"	1"	1 1/4"	1 1/2"	2"	2 1/2"	3"	4"
ANSI (NPT)(Taper)	250002	250003	250004	250005	250006	250007	250008	250009	250010	250011	250012

DIMENSIONS

SIZE	A	B	C	D	E
1/4"	1.756	1.732	3.543	0.394	0.457
3/8"	1.756	1.732	3.543	0.394	0.457
1/2"	2.047	1.941	3.543	0.583	0.520
3/4"	2.362	2.106	3.780	0.748	0.563
1"	2.756	2.579	4.528	0.945	0.630
1 1/4"	3.307	2.961	4.528	1.260	0.709
1 1/2"	3.661	3.366	5.512	1.575	0.717
2"	4.181	3.701	5.512	1.969	0.748
2 1/2"	5.378	4.803	8.661	2.520	1.024
3"	6.039	5.118	8.661	2.913	1.102
4"	7.386	5.984	9.606	3.898	1.220

MATERIAL SPECIFICATION

	Component	
1	Body	Brass ASTM B283 alloy C37700
2	Retainers	Brass ASTM B283 alloy C37700
3	Seats	PTFE (Teflon)
4	Ball	Brass ASTM B283, C37700 Chrome Plated
5	Stem	Brass ASTM B283 C37700
6	Stem Packing	PTFE
7	Gland Nut	Brass ASTM B16, C36000
8	Yellow Lever	Plated Steel / Insulated Polyvinyl
9	Stem Nut	A570 GrA



PERFORMANCE RATING

- Rating: 600 CWP (1/4" – 2")
- Rating: 400 CWP (2 1/2" – 4")
- Steam Rating: 150 psi SWP
- Temperature Range: 0°F - 400°F
- Vacuum Service to 29 in. Hg