

Flanged pressure reducing valve DRVD



- Model with balanced valve and piston, guaranteeing a very high reliability and longevity.
- The DRVD is ideal for any main pressure reducing or regulation of secondary circuits.

 **WATTS**[®]
INDUSTRIES

A Division of Watts Water Technologies Inc.



Application scope:

The pressure reducing valve DRVD can be used on water, compressed air, air with oil removed or all neutral gases.

It maintains automatically the downstream to the set point pressure, as long as the input pressure is greater.

The DRVD is insensitive to variations in upstream pressure.

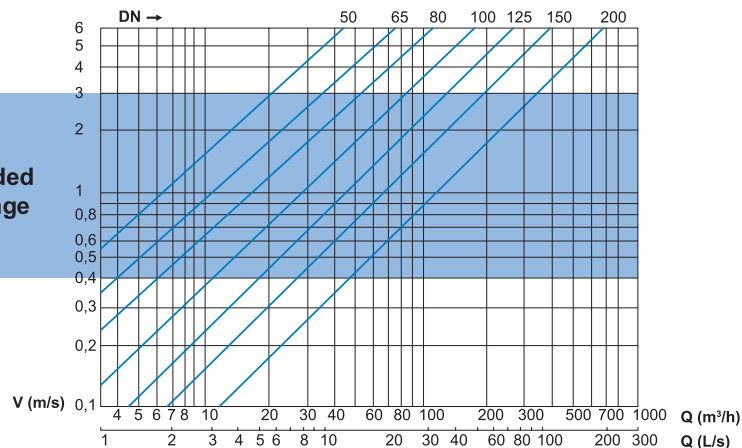
It is particularly recommended for collective or industrial installations.

Standard : PN16, pressure setting range : from 1,5 to 6 bar.

PN25, pressure setting range : from 4 to 12 bar.

Determination of size Choice of the DN :

Recommended
working range



Flanged pressure reducing valve DRVD PN16

diameter	setting range	type	ref. code	packaging
DN 50	1,5 to 6 bar	DRVD PN16	L 05.04.053	1
DN 65	1,5 to 6 bar	DRVD PN16	L 05.04.068	1
DN 80	1,5 to 6 bar	DRVD PN16	L 05.04.083	1
DN 100	1,5 to 6 bar	DRVD PN16	L 05.04.103	1
DN 125	1,5 to 6 bar	DRVD PN16	L 05.04.128	1
DN 150	1,5 to 6 bar	DRVD PN16	L 05.04.153	1
DN 200 (on request)	1,5 to 6 bar	DRVD PN16	L 05.04.203	1

Flanged pressure reducing valve DRVD PN25

Identical model to the standard DRVD above but PN25 and standard setting from 4 to 12 bar. Contact us for the delivery time.

diameter	setting range	type	ref. code	packaging
DN 50	4 to 12 bar	DRVD PN25	L 05.04.050	1
DN 65	4 to 12 bar	DRVD PN25	L 05.04.065	1
DN 80	4 to 12 bar	DRVD PN25	L 05.04.080	1
DN 100	4 to 12 bar	DRVD PN25	L 05.04.100	1
DN 125	4 to 12 bar	DRVD PN25	L 05.04.125	1
DN 150	4 to 12 bar	DRVD PN25	L 05.04.150	1

Spring kits (2 to 8 bar)

ref. code	type
L 05.99.070	DF 8/DRVD 50
L 05.99.071	DF 8/DRVD 65
L 05.99.072	DF 8/DRVD 80
L 05.99.073	DF 8/DRVD 100
L 05.99.075	DF 8/DRVD 150

Spring kits (4 to 12 bar)

ref. code	type
L 05.99.080	DF 12/DRVD 50
L 05.99.081	DF 12/DRVD 65
L 05.99.082	DF 12/DRVD 80
L 05.99.083	DF 12/DRVD 100
L 05.99.084	DF 12/DRVD 125
L 05.99.085	DF 12/DRVD 150
L 05.99.086	DF 12/DRVD 200

Seals kits (PN 16 & PN 25)

diameter	type	ref. code
DN 50	JT/DRVD	L 05.99.200
DN 65	JT/DRVD	L 05.99.201
DN 80	JT/DRVD	L 05.99.202
DN 100	JT/DRVD	L 05.99.203
DN 125	JT/DRVD	L 05.99.204
DN 150	JT/DRVD	L 05.99.205
DN 200	JT/DRVD	L 05.99.206

Seals bag for DRVD.

Maintenance kits shown in the table above are available; to order, it is necessary to indicate all informations shown on the metal plate placed on the body of the DRVD plate placed on the body.

Commissioning:

Check that the piping on which the pressure reducing valve must be installed is clean of welding residues or other waste. It is recommended to install a filter immediately upstream of the pressure reducing valve and the isolating valves upstream and downstream.

When installing, observe the direction of installation of the DRVD shown by the arrow engraved on the body. In order to carry out the setting of reduction unit or its maintenance, provide sufficient space.

Setting:

- Adjustable outlet pressure :
- 1,5 to 6,0 bar
 - 2,0 to 8,0 bar (not setted up at the manufacture, see spring kits)
 - 4,0 to 12,0 bar

The setting of the downstream pressure must be conducted at flow zero.

Loosen the lock nut to release the adjustment screw (No. 10 on the diagram below).

Turn the screw in a clockwise direction for more pressure and in the sense opposite a clockwise to lower the pressure.

The gauge plugs of the device are in female 8x13 (1/4").

Maintenance:

It is recommended to ask a professional to check regularly the device.

The device is designed for easy maintenance.

Disassembly operations are conducted without removing the device.

Periodically clean the filter placed immediately upstream of the DRVD.

1 - All the internal parts of the DRVD are accessible after removing the cover and the bottom flange (No. 3 on the diagram).

2 - The piston removable by unscrewing the piston screw (or nut piston depending on the diameter of the DRVD) accessible through the bottom flange on the bottom.

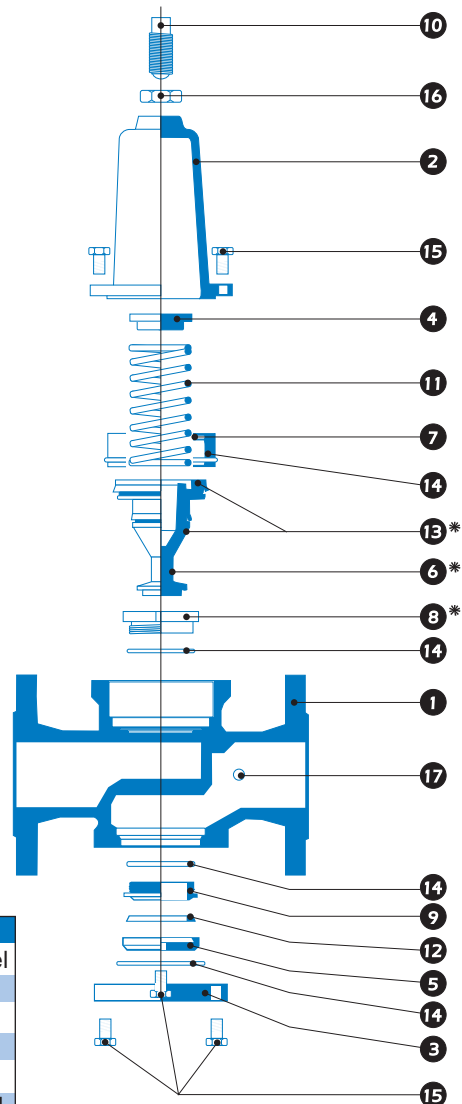
Provide a locking plier (e.g.: FACOM N° 500 Locking plier or a clamp) to maintain the piston with the DRVD body. Assembly the piston-maintained with the locking plier, you can unscrew the piston screw.

3 - Piston screw loose with a standard pipe wrench (e.g.: wrench FACOM N°72) except for the DRVD diameter 125, 150 and 200 where a pipe wrench type "Nervus" is necessary (e.g.: key Nervus FACOM N°92).

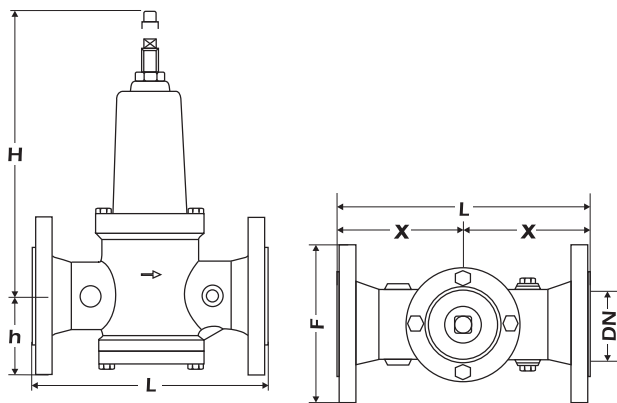
The table below shows you the size of the piston screw.

DN	Piston screw	DN	Nut
DN 50	13 mm	DN 125	32 mm
DN 65	17 mm	DN 150	35 mm
DN 80	17 mm	DN 200	36 mm
DN 100	17 mm		

description	materials	description	materials
1 Body	Cast iron G.S.	10 Setting screw	Cadmium steel
2 Cover	Cast iron G.S.	11 Spring	Coated steel
3 Flange	Cast iron	12 Brace washer	NBR
4 Spring disc	Cadmium steel	13 Seal	NBR
5 Seal support	Brass	14 Seal	NBR
6 Shutter	Brass	15 Cover screw	Stainless steel
7 Jacket	Bronze	16 Nut	Cadmium steel
8 Ring	Bronze	17 Plug	Brass
9 Seat	Bronze		

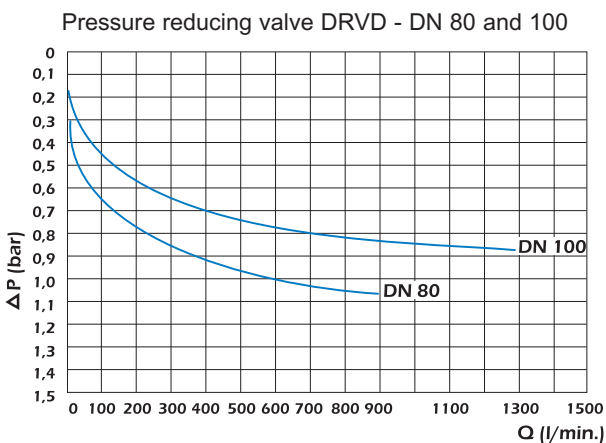
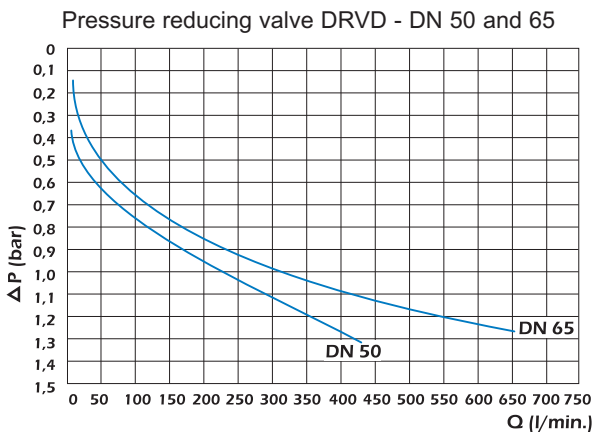


Dimensions:



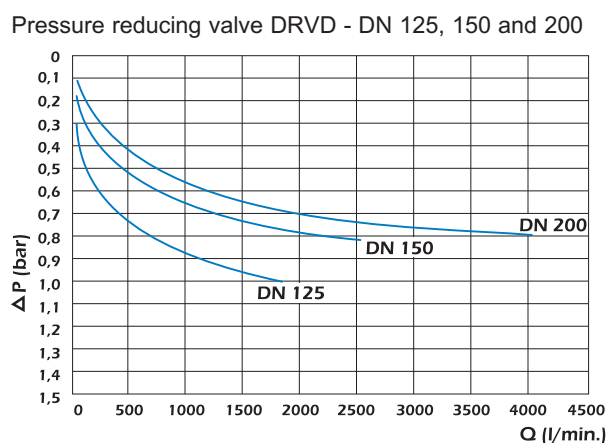
models	DN	L (mm)	H (mm)	h (mm)	F (mm)
DRV-D50	50	230	300	83	165
DRV-D65	65	290	350	90	185
DRV-D80	80	310	390	100	200
DRV-D100	100	350	440	121	220
DRV-D125	125	400	560	152	250
DRV-D150	150	450	670	169	285
DRV-D200	200	550	1050	234	340

Pressure drop curve / headloss:



Technical characteristics:

- Body: ductile cast iron covered epoxy varnish (inside & outside).
- Shutter: Brass OT 58
- Brace washer: NBR (Nitrile)
- Ring: Bronze
- Max. temperature: 40°C
- Min. working pressure (PMA) :
 - PN 16 : 16 bar
 - PN 25 : 25 bar



The photographs, illustrations and descriptions contained in this brochure are given for information only. Watts Industries reserves the right to change the technical specifications or the design of these products without prior notice.



A Division of Watts Water Technologies Inc.

WATTS INDUSTRIES France

1590 avenue d'Orange CS 10101 SORGUES
 84275 VEDENE cedex - FRANCE
 Tel. +33 (0)4 90 33 28 28 - Fax +33 (0)4 90 33 28 29/39
www.wattsindustries.com
 E-mail : info@wattsindustries.fr