

1065 Forged Brass Full Bore Gate Valve

Forged brass full way gate valve

GENERAL INFORMATION

Pattern No. key :Standard Thread = BS21 Taper, AT = American Thread

Size	Pattern No.	Pack 1 Qty.	Code	Barcode
1/2	1065	10	202007	5013866014741
3/4	1065	10	202008	5013866014758
1	1065	5	202009	5013866014765
1 1/4	1065	5	202010	5013866014772
1 1/2	1065	2	202011	5013866014789
2	1065	2	202012	5013866014796
1/2	1065 AT	10	202042	753818004158
3/4	1065 AT	10	202043	753818004165
1	1065 AT	5	202044	753818004172
1 1/4	1065 AT	5	202045	753818004189
1 1/2	1065 AT	2	202046	753818004196
2	1065 AT	2	202047	753818004202

DIMENSIONS (mm)

Code	Description	A Face To Face	B Height	Weight
202007	1/2 1065 BRASS GATE VALVE	46	70	0.27
202008	3/4 1065 BRASS GATE VALVE	50	80	0.37
202009	1 1065 BRASS GATE VALVE	57	95	0.58
202010	1.1/4 1065 BRASS GATE VALVE	64	115	0.94
202011	1.1/2 1065 BRASS GATE VALVE	68	125	1.19
202012	2 1065 BRASS GATE VALVE	81	155	2.09
202042	1/2 1065 AT BRASS GATE VALVE	46	70	0.27
202043	3/4 1065 AT BRASS GATE VALVE	50	80	0.37
202044	1 1065 AT BRASS GATE VALVE	57	95	0.58
202045	1.1/4 1065 AT BRASS GATE VALVE	64	115	0.94
202046	1.1/2 1065 AT BRASS GATE VALVE	68	125	1.19
202047	2 1065 AT BRASS GATE VALVE	81	155	2.09

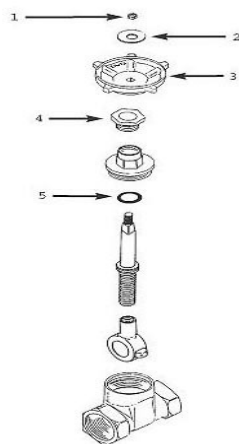
PRESSURE & TEMPERATURE

1065 Forged Brass Full Bore Gate Valve	Minimum Operating Pressure (bar)	Maximum Cold Working Pressure (bar)	Maximum Hot Working Pressure (bar)
1/2 1065 BRASS GATE VALVE	No Minimum Operating Pressure	17.5 bar at temperatures up to 93oC	Not Suitable for Maximum Hot Working Pressure

MATERIAL SPECIFICATIONS

Number	Component	Material
1	Body	Forged Brass
2	Bonnet	Forged Brass
3	Stem	Brass Bar
4	Wedge	Forged Brass
5	Gland Screw	Brass Bar
6	Handwheel	Aluminium
7	Handwheel Nut	Brass Bar
8	O Rings	Nitrile Rubber
9	Rating Disc	Aluminium

SPARES



1					
Pattern / Size	Description	Code	Barcode	Date From	Date To
1065 / 1/2	WN1 HANDWHEEL NUT BRASS (M5)	850481	5013866060977	01/01/1900	current
1065 / 3/4	WN1 HANDWHEEL NUT BRASS (M5)	850481	5013866060977	01/01/1900	current
1065 / 1	WN1 HANDWHEEL NUT BRASS (M5)	850481	5013866060977	01/05/1997	current
1065 / 1	WN2 HANDWHEEL NUT BRASS (M6)	850482	5013866060984	01/01/1990	30/04/1997
1065 / 1.1/4	WN2 HANDWHEEL NUT BRASS (M6)	850482	5013866060984	01/01/1900	current
1065 / 1.1/2	WN2 HANDWHEEL NUT BRASS (M6)	850482	5013866060984	01/01/1900	current
1065 / 2	WN2 HANDWHEEL NUT BRASS (M6)	850482	5013866060984	01/01/1900	current

2					
Pattern / Size	Description	Code	Barcode	Date From	Date To
1065 / 1/2	RATING DISC 1065 - SIZE 1	850421	5013866060557	01/01/1900	current
1065 / 3/4	RATING DISC 1065 - SIZE 1	850421	5013866060557	01/01/1900	current
1065 / 1	RATING DISC 1065 - SIZE 1	850421	5013866060557	01/01/1900	current
1065 / 1.1/4	RATING DISC 1065 - SIZE 1	850421	5013866060557	01/01/1900	current
1065 / 1.1/2	RATING DISC 1065 - SIZE 1	850421	5013866060557	01/01/1900	current
1065 / 2	RATING DISC 1065 - SIZE 1	850421	5013866060557	01/01/1900	current

3					
Pattern / Size	Description	Code	Barcode	Date From	Date To
1065 / 1/2	W1 HANDWHEEL (RED)	850100	5013866059513	01/01/1900	current
1065 / 3/4	W1 HANDWHEEL (RED)	850100	5013866059513	01/01/1900	current
1065 / 1	W3 HANDWHEEL (RED)	850101	5013866059520	01/05/1997	current
1065 / 1	W4 HANDWHEEL (RED)	850102	5013866059537	01/01/1990	30/04/1997
1065 / 1.1/4	W5 HANDWHEEL (RED)	850103	5013866059544	01/01/1900	current
1065 / 1.1/2	W6 HANDWHEEL (RED)	850104	5013866059551	01/01/1900	current
1065 / 2	W7 HANDWHEEL (RED)	850105	5013866059568	01/01/1900	current

4					
Pattern / Size	Description	Code	Barcode	Date From	Date To
1065 / 1/2	GS2 GLAND SCREW	850336	5013866060090	01/01/1900	current
1065 / 3/4	GS2 GLAND SCREW	850336	5013866060090	01/01/1900	current
1065 / 1	GS5 GLAND SCREW	850339	5013866060120	01/01/1900	current
1065 / 1.1/4	GS7 GLAND SCREW	850341	5013866060137	01/01/1900	current
1065 / 1.1/2	GS9 GLAND SCREW	850343	5013866060151	01/01/1900	current
1065 / 2	GS11 GLAND SCREW	850345	5013866060175	01/01/1900	current

5					
Pattern / Size	Description	Code	Barcode	Date From	Date To
1065 / 1/2	OR28 O RING	850370	5013866060281	01/01/1900	current
1065 / 3/4	OR28 O RING	850370	5013866060281	01/01/1900	current
1065 / 1	OR29 O RING	850371	5013866060298	01/01/1900	current
1065 / 1.1/4	OR30 O RING	850372	5013866060304	01/01/1900	current
1065 / 1.1/2	OR31 O RING	850373	5013866060311	01/01/1900	current
1065 / 2	OR32 O RING	850374	5013866060328	01/01/1900	current

CARE & MAINTENANCE

Care

No regular aesthetic care is required for this product

Maintenance

A regular maintenance program is the most efficient method of ensuring longer term operational efficiency of the selected valve. Such a program would need to include a risk assessment and a planned procedure of how the maintenance will be carried out. The possibility of operational limits being exceeded and the potential hazards ensuring must be considered as part of this assessment. This should be implemented to include visual checks on the valve's condition and any development of unforeseen conditions, which could lead to failure. The correct fitting tools and equipment should be used for valve maintenance work. Separate means of draining the pipe work must be provided when carrying out any maintenance to valves. Where there may be any system debris this could be collected and /or filtered by installation of the appropriate protective device.

For further help please contact your local engineer.

If your product is under warranty please contact the Service Support Team on: 0800 1560050

REGULATIONS

Regulations

THE PRESSURE EQUIPMENT DIRECTIVE 97/23/EC and CE MARKING

The Pressure Equipment Regulations 1999 (SI 1999/2001) have now been introduced into United Kingdom law.

Valves with a maximum allowable pressure greater than 0.5 bar are covered by these new Regulations. Valves are categorised according to their maximum working pressure, size and rising level of hazard. The level of hazard varies according to the fluid being carried. Fluids are classified as Group 1, dangerous fluids or Group 2, all other fluids including steam. The Categories designated are SEP (sound engineering practice). Valves up to and including 25mm (1") are designated SEP regardless of the fluid group. Those identified as having increased hazard are Categorised as, I, II, III or IV. All valves designated as SEP do not bear the CE mark nor require a Declaration of Conformity. Categories I, II, III or IV carry the CE mark and require a Declaration of Conformity. Valves classified from the piping chart would not be included in Category IV.

GUARANTEE

Valves and Fittings

Pegler Yorkshire Customcare 5 Year Guarantee - Terms and Conditions

Products are subject to a 5 year guarantee that is between Pegler Yorkshire and the final purchaser of the product.

The guarantee is subject to proof of purchase being supplied.

This guarantee does not affect any statutory rights the consumer may have in law.

The guarantee covers manufacturing or material defects and does not cover parts subject to normal wear and tear.

This product range has been designed for the use of homeowners, domestic and commercial applications and therefore the guarantee is subject to the product being properly selected for their intended service conditions.

The guarantee is not applicable where the product is fitted contrary to the conditions in the fitting instructions.

This is reinforced where valves are covered by the European Pressure Equipment Directive (PED97/23/EC) where Installation, Operating and Maintenance Instructions are supplied with each product and/or carton.

Provided it is installed correctly and receives adequate preventative maintenance it should give years of trouble – free service.

Abusive behaviour and accidental damage to the product are not covered by this guarantee.

The extent of this liability is limited to the cost of the replacement of the defective item and not to fitting or consequential damages.

APPROVALS



WRAS



[WRAS](#)