

Bourdon Tube Pressure Gauges

Standard Series, Radial Pressure Entry • Model 111.10

Pressure Gauges

Service intended

General purpose pressure gauge. Suitable for all gaseous and liquid media that will not obstruct the pressure system or attack copper alloy parts.

Design

EN 837-1

Nominal size

40, 50, 63, 80, 100 and 160 mm

Accuracy class per EN 837-1 /6)

40, 50 and 63 mm: 1.6 / 2.5 *
80, 100 and 160 mm: 1.6

Scale ranges per EN 837-1 /5)

0 ... 0.6 to 0 ... 400 bar (max. 40 bar with 160 mm)
or other equivalent units of pressure or vacuum.

Working pressure

Steady: $\frac{3}{4}$ of full scale value
Fluctuating: $\frac{2}{3}$ of full scale value
Short time: full scale value

Operating Temperature

Ambient: -40 ... +60 °C
Medium: +60 °C maximum

Temperature error

Additional error when temperature of the pressure element deviates from +20 °C

Rising temperature: +0.3%/10 K of true scale value
Falling temperature: -0.3%/10 K of true scale value

Standard features

Pressure connection

Material: Cu-alloy
Threaded entry (radial) per EN 837-1 /7.3
40 mm: G $\frac{1}{8}$ A, 12 mm flats
50 and 63 mm: G $\frac{1}{4}$ A, 14 mm flats
80, 100 and 160 mm: G $\frac{1}{2}$ A, 22 mm flats

Pressure element

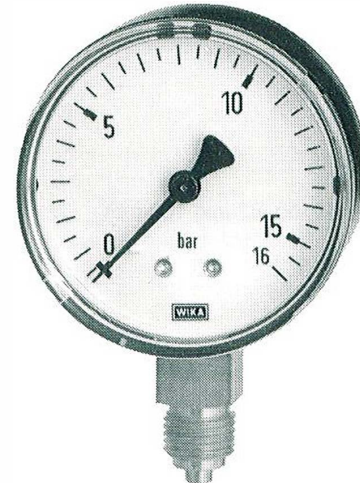
Material: Cu-alloy
≤ 40 bar: C-type
> 40 bar: helical type

Movement

Cu-alloy

Dial

40, 50 and 63 mm: white plastic, with pointer stop pin
80, 100 and 160 mm: white aluminium, with pointer stop pin
With black lettering



Pointer

Black plastic
160 mm only: black aluminium

Case

Black plastic
160 mm only: black finish steel

Window

Crystal-clear plastic, snap-fit
160 mm only: instrument glass

Bezel ring

Without bezel
160 mm only: black finish steel

Optional extras

- Other pressure connection
- Black finish steel case
- Slip-on bezel
- 3-hole surface mounting flange

Back pressure entry see data sheet PM 01.09

Panel mounting, back pressure entry see data sheet PM 01.10

* for stock instruments or as option: class 1.6